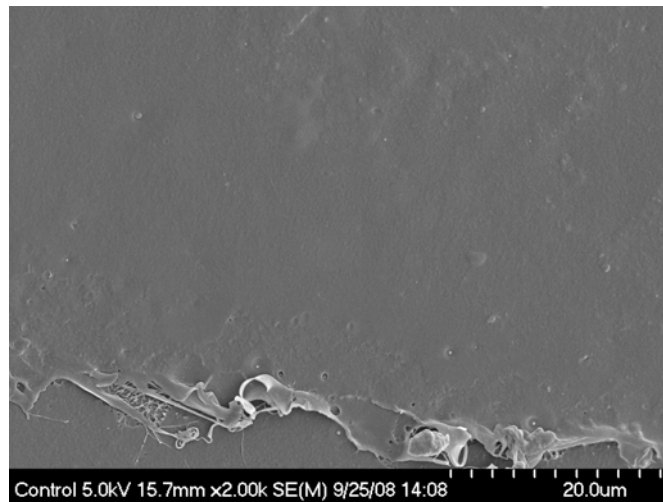


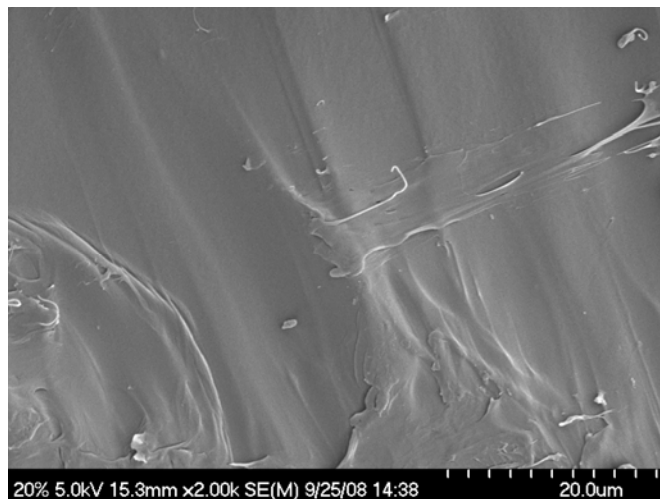


Lapol is a lactic acid based polymer and is therefore compatible and fully miscible with poly lactic acid; no compatibilizers are necessary when compounding Lapol and PLA. The scanning electron microscope micrographs below show the complete miscibility of the two resins.

100% PLA Control



20% Lapol 80% PLA



Lapol, LLC

55 Castilian Drive / Santa Barbara, CA / 93117
Tel: 805-456-7950 / Fax: 805-563-7594 / www.lapol.net